

LRRC45 Antibody (C-term)
Affinity Purified Rabbit Polyclonal Antibody (Pab)
Catalog # AP11368b**Specification**

LRRC45 Antibody (C-term) - Product Information

Application	WB, IF, IHC-P, FC,E
Primary Accession	O96CN5
Other Accession	NP_659436.1
Reactivity	Human
Host	Rabbit
Clonality	Polyclonal
Isotype	Rabbit IgG
Calculated MW	75951
Antigen Region	615-643

LRRC45 Antibody (C-term) - Additional Information**Gene ID** 201255**Other Names**

Leucine-rich repeat-containing protein 45, LRRC45

Target/Specificity

This LRRC45 antibody is generated from rabbits immunized with a KLH conjugated synthetic peptide between 615-643 amino acids from the C-terminal region of human LRRC45.

Dilution

WB~~1:1000

IF~~1:25

IHC-P~~1:50~100

FC~~1:10~50

E~~Use at an assay dependent concentration.

Format

Purified polyclonal antibody supplied in PBS with 0.09% (W/V) sodium azide. This antibody is purified through a protein A column, followed by peptide affinity purification.

Storage

Maintain refrigerated at 2-8°C for up to 2 weeks. For long term storage store at -20°C in small aliquots to prevent freeze-thaw cycles.

Precautions

LRRC45 Antibody (C-term) is for research use only and not for use in diagnostic or therapeutic procedures.

LRRC45 Antibody (C-term) - Protein Information

Name LRRC45

Function Component of the proteinaceous fiber-like linker between two centrioles, required for centrosome cohesion.

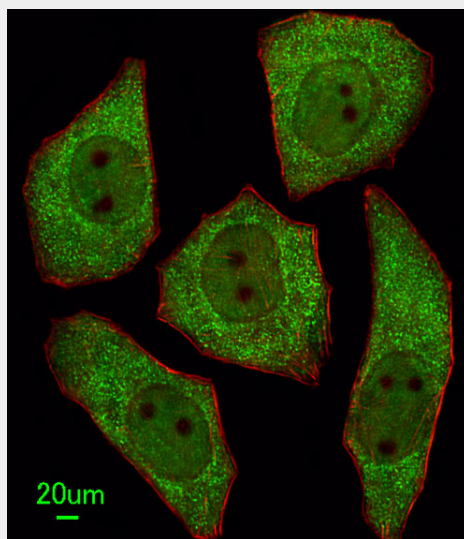
Cellular Location

Cytoplasm, cytoskeleton, microtubule organizing center, centrosome. Note=Localizes to the proteinaceous linker between the proximal ends of the centrioles

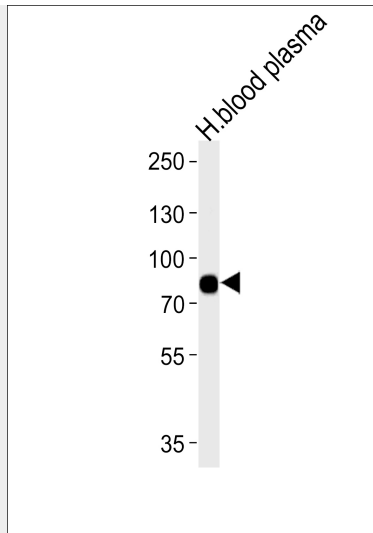
LRRC45 Antibody (C-term) - Protocols

Provided below are standard protocols that you may find useful for product applications.

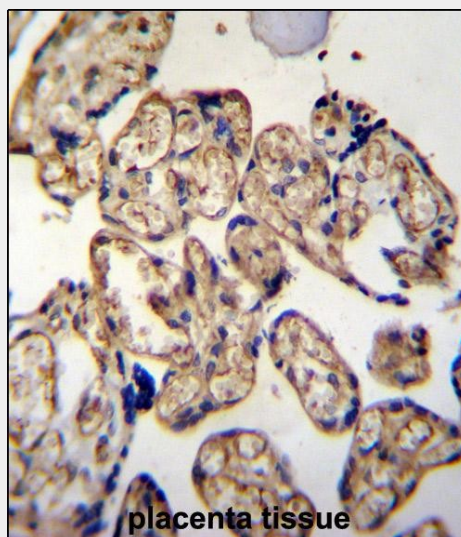
- [Western Blot](#)
- [Blocking Peptides](#)
- [Dot Blot](#)
- [Immunohistochemistry](#)
- [Immunofluorescence](#)
- [Immunoprecipitation](#)
- [Flow Cytometry](#)
- [Cell Culture](#)

LRRC45 Antibody (C-term) - Images

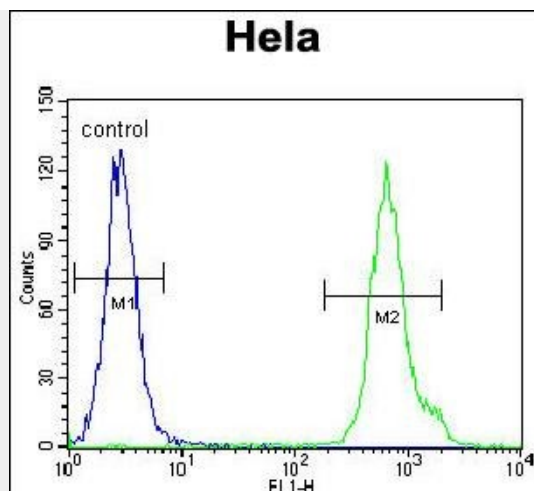
Immunofluorescent analysis of U251 cells, using LRRC45 Antibody (C-term) (Cat. #AP11368b). AP11368b was diluted at 1:25 dilution. Alexa Fluor 488-conjugated goat anti-rabbit IgG at 1:400 dilution was used as the secondary antibody (green). Cytoplasmic actin was counterstained with Dylight Fluor® 554 (red) conjugated Phalloidin (red).



Western blot analysis of lysates from human blood plasma tissue (from left to right), using LRRC45 Antibody (C-term) (Cat. #AP11368b). AP11368b was diluted at 1:1000 at each lane. A goat anti-rabbit IgG H&L (HRP) at 1:5000 dilution was used as the secondary antibody. Lysates at 35ug per lane.



LRRC45 Antibody (C-term) (Cat. #AP11368b) immunohistochemistry analysis in formalin fixed and paraffin embedded human placenta tissue followed by peroxidase conjugation of the secondary antibody and DAB staining. This data demonstrates the use of LRRC45 Antibody (C-term) for immunohistochemistry. Clinical relevance has not been evaluated.



LRRC45 Antibody (C-term) (Cat. #AP11368b) flow cytometric analysis of Hela cells (right histogram) compared to a negative control cell (left histogram). FITC-conjugated goat-anti-rabbit secondary antibodies were used for the analysis.

LRRC45 Antibody (C-term) - References

Olsen, J.V., et al. Cell 127(3):635-648(2006) Gerhard, D.S., et al. Genome Res. 14 (10B), 2121-2127 (2004) :